



## A META-ANALYSIS: USE OF STUDENT WORKSHEETS BASED ON LOCAL WISDOM FROM 2013-2022

Munjiatun<sup>1</sup>, Otang Kurniaman<sup>2</sup>, Guslinda<sup>3</sup>, Zufriady<sup>4</sup>, Siti Kurnia Rahayu<sup>5</sup>,  
Yuyun Santika<sup>6</sup>

<sup>1,2,3,4,5,6</sup>Elementary School Teacher Education Study Program, Universitas Riau, Indonesia

<sup>1</sup>[munjiatun@lecturer.unri.ac.id](mailto:munjiatun@lecturer.unri.ac.id), <sup>2</sup>[otang.kurniaman@lecturer.unri.ac.id](mailto:otang.kurniaman@lecturer.unri.ac.id), <sup>3</sup>[guslinda@lecturer.unri.ac.id](mailto:guslinda@lecturer.unri.ac.id),  
<sup>4</sup>[zufriady@lecturer.unri.ac.id](mailto:zufriady@lecturer.unri.ac.id), <sup>5</sup>[siti.kurnia1115@student.unri.ac.id](mailto:siti.kurnia1115@student.unri.ac.id), <sup>6</sup>[yuyun.santika1174@student.unri.ac.id](mailto:yuyun.santika1174@student.unri.ac.id)

## SEBUAH METANALISIS: PENGGUNAAN LEMBAR KERJA PESERTA DIDIK BERBASIS KEARIFAN LOKAL DILIHAT DARI TAHUN 2013-2022

### ARTICLE HISTORY

**Submitted:**  
18 Juni 2022  
18<sup>th</sup> June 2022

**Accepted:**  
20 Juli 2022  
20<sup>th</sup> July 2022

**Published:**  
25 Agustus 2022  
25<sup>th</sup> August 2022

### ABSTRACT

**Abstract:** Research that was conducted by researchers from 2013-2022 has mostly been about teaching materials combined with local wisdom in learning in elementary and junior high schools (SMP). However, there is still certain research on students' worksheets related to local wisdom based on the content of social science learning subjects in elementary schools. This article provides an overview of the percentage of use of student worksheets, the use of research methods, and the results or positive impacts or contributions of the research on the motivation of an educator to create or modify teaching materials based on local wisdom. Meta-analysis was carried out by searching for articles from web journals through Google Scholar and obtaining 50 articles that were saved in the research data documents. After the analysis, it was obtained that 30 articles matched the criteria. The meta-analysis that was carried out produced an overview that the most dominant percentage of students' worksheets was 27% in 2020 and the research method used was the R&D method with a percentage of 64%. And the results of the research were getting good responses from validators, teachers, and students with the average category being very good.

**Keywords:** a meta-analysis, students' worksheet, local wisdom

**Abstrak:** Penelitian yang dilakukan oleh peneliti sejak tahun 2013-2022 banyak mengenai bahan ajar yang dipadukan dengan kearifan lokal dalam pembelajaran di sekolah dasar dan menengah pertama (SMP). Akan tetapi, masih sangat sedikit penelitian mengenai lembar kerja peserta didik yang dikaitkan dengan kearifan lokal dalam muatan pembelajaran IPS di sekolah dasar. Artikel ini memberikan sebuah gambaran terhadap presentase penggunaan lembar kerja peserta didik dan penggunaan metode penelitian serta hasil atau dampak positif atau kontribusi penelitian terhadap motivasi seorang pendidik untuk membuat atau memodifikasi bahan ajar berbasis kearifan lokal. Metaanalisis dilakukan dengan mencari artikel dari web jurnal online melalui google scholar dan diperoleh 50 artikel yang tersimpan pada dokumen data penelitian. Setelah dilakukan analisis menghasilkan 30 artikel yang cocok dengan kriteria. Metaanalisis yang dilakukan menghasilkan gambaran bahwa presentase penggunaan lembar kerja peserta didik paling dominan adalah di tahun 2020 dengan presentasi 27% dan penggunaan metode penelitian adalah metode R&D dengan presentase 64%. Dan hasil dari penelitian para peneliti adalah mendapatkan respon baik dari validator, guru, dan peserta didik dengan rata-rata kategori adalah sangat baik.

**Kata Kunci:** metanalisis, lembar kerja siswa, kearifan lokal

### CITATION

Munjiatun., Kurniaman, O., Guslinda., Zufriady., Rahayu, S, K., & Santika, Y . (2022). A Metaanalysis: Use Of Student Worksheets Based On Local Wisdom Viewing From 2013-



## INTRODUCTION

The nature of education is a process to influence and shape students so that they can adapt well to their environment. Education is one of the means for the formation of humanity so that the position of humans as subjects of culture can be maintained and developed (Kristin & Artikel, 2018). The changing times that are increasingly sophisticated like today have made the nation's culture slowly eroded and abandoned. Therefore, awareness of culture is needed for the next generation, one of which is education (Fauzi, 2022). Integrating subjects with local culture in teaching materials is one solution to introduce local wisdom to students. Utilization of culture which is an element of local wisdom can foster self-awareness in preserving nature. Teaching materials used such as student worksheets (LKPD) that are good and appropriate will help students in groups or independently in doing assignments, understanding lessons and improving students' knowledge and skills. Student worksheets prepared by educators can be designed and developed according to the circumstances and situations of learning activities that will be faced (Mursalim & Rumbarak, 2021).

The meta-analysis of this article is important because it can provide an overview of LKPD based on local wisdom that is able to solve the problem of the erosion of national culture in the current era. Based on research that has been done by researchers, teaching materials based on local wisdom can improve students' academic abilities and understanding of local culture. However, the values held by the community which are full of local wisdom values are ignored in various lessons, including social studies in elementary schools (Zuhdan, 2013). Whereas social studies is a subject that is

very closely related to social life which when combined with local wisdom can improve the quality of learning and learning will be more meaningful for students. Therefore, local wisdom-based LKPD is needed in social studies learning in elementary schools.

Social studies learning in elementary schools has a goal that emphasizes the skills of students in solving problems experienced by themselves and other individuals related to everyday life. Social studies subjects are arranged systematically, and integrated in the process of maturation and successful adaptation in social life (Krismona Arsana & Sujana, 2021). Thus, it is important to integrate social studies learning with local wisdom that contains values, norms, beliefs and practices that are shared, created and passed down from generation to generation accompanied by local technology. This is in line with Law Number 23 of 2003 concerning the National Education System which states that national education is education based on Pancasila and the 1945 Constitution which is rooted in religious values, Indonesian national culture and is responsive to the demands of changing times (*Undang-Undang No.23 Tahun 2003 Tentang Sistem Pendidikan Nasional*, n.d.). The meta-analysis of this article aims to provide an overview of the use of appropriate local wisdom-based teaching materials to increase students' understanding of local culture and form a generation that loves and participates in maintaining and preserving local culture.

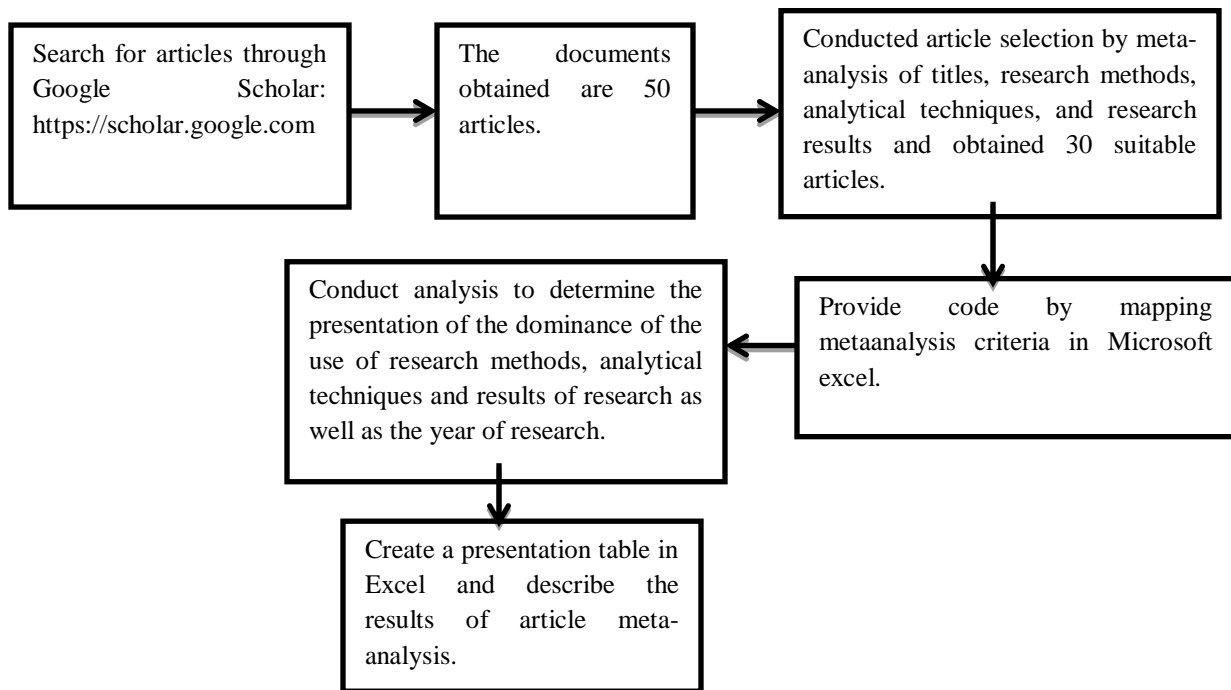
RQ1: What is the percentage of students' use of worksheets from 2013-2022?

RQ2: How is the use of research methods and student worksheet research results?

## RESEARCH METHODS

Meta-analysis is done by searching for articles from web journals through Google Shoclar which is widely used to find trusted sources of literature at the Google Scholar information center. Which, there are many articles from various web eournals available at public and private universities in Indonesia. The author searches for articles by writing the keywords "student worksheets based on local wisdom". With these keywords, the authors found many articles on student worksheets as well as other teaching materials such as modules

and student worksheets (LKPD). The articles found were 50 articles as research data documents, however, only 30 articles matched the criteria sought by the author. The analytical techniques used in conducting this metaanalysis are 1) to record articles that match Microsoft Excel as a place to store and analyze research data. 2) analyze articles and create presentation charts according to the research statement category, 3) describe the graphic data for each category. The article meta-analysis process carried out is as follows.



**Figure 1. Article Meta-analysis Process**

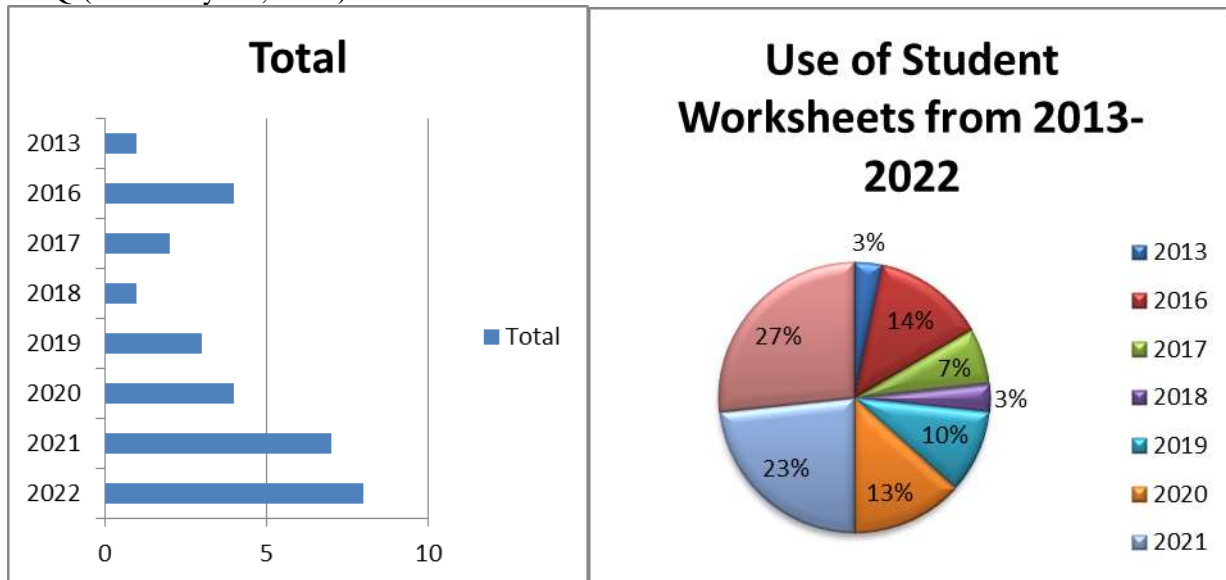
## RESULTS AND DISCUSSION

Based on the meta-analysis of 30 articles, the percentage of students' use of worksheets is quite high. But the use of student worksheets each year is different. In 2013 the percentage of student worksheet usage was 3%, in 2016 it was 14%, in 2017 it was 7%, in 2018

it was 3%, in 2019 it was 10%, in 2020 it was 13%, in 2021 it was 23%, and 2022 is 27%. In 2013 the use of student worksheets was low, only 3% because this year the use of teaching materials in the form of comics was more dominant. Because students who study using comics oriented to local Balinese wisdom are

superior to students who learn without using comics oriented to local wisdom (Pramadi et al., 2013). In 2016 the use of student worksheets was not much but it was more than 2013. Because in that year, researchers tended to use student worksheets (LKS). In 2017 and 2018 the use of student worksheets was very little. Because in 2017 researchers focused on strengthening character education. Character education which consists of developing a positive attitude, essential mindset, normative commitment, and ability components based on IESQ (Rachmadyanti, 2017). In 2018 it is more

likely to use ethnopedagogy to regulate behavior that is beneficial for the common interest of the community if it is associated with local wisdom (Oktavianti & Ratnasari, 2018). Meanwhile, in 2019 and 2020 the use of student worksheets began to increase from the previous year and was more likely to use models, rhyme-based student worksheets, animated videos, audio-visual media, and training on making student worksheets for educators in a training or upgrading.



**Figure 2. Mapping Data for Years of Use of Student Worksheets**

Judging from the graph, there has been an increase in the use of student worksheets in the last 2 years. It can be seen in table 1 that in 2022 the use of student worksheets was more than in the previous year with a value of 27%. Because the results of research conducted by researchers show that student worksheets have a positive impact on learning and can be associated with various fields of science or subjects. Student worksheets based on local

wisdom design the learning process not only in the classroom, but also through the students' immediate environment (Arianty et al., 2021). This is one of the references that the student worksheets have a good impact on the learning process and learning outcomes. In 2020 and above, the use of student worksheets has increased with the development of student worksheets carried out by researchers, especially students at both public and private universities.



In the 2013-2022 period, the teaching materials used by researchers in addition to student worksheets were modules, student worksheets, models, thematic teaching materials, animated videos, comics, ethnopedagogy, and audio-visual media. Curriculum changes that occur make little influence in the selection of teaching

materials used, with differences in the use of teaching materials in research by researchers will provide a wider perspective in solving problems in the world of education. Thus, students feel different simulations from the use of different teaching materials.

**Table 1. Overview of Meta-analysis Results Data**

No	Year	Author	Method	Results
1.	2013	Pramadi, et al.	Experiment	The use of local wisdom-oriented comics increases student learning outcomes.
2.	2016	Siswani, et al.	Participatory Learning and Action	It can increase students' insight into Banyumas local wisdom and make learning interesting.
3.	2016	Pratiwi	R&D	Student worksheets are valid in terms of content and material aspects with an average of 4.44 very good categories, language aspects are good, design aspects are very good and teacher responses get good categories and students are very good categories.
4.	2016	Utari, et al.	Descriptive Qualitative	Thematic learning based on local wisdom will be a connection in understanding students to act appropriately in facing the ASEAN economy.
5.	2016	Dasar	Descriptive Qualitative	Through learning art and culture in the form of dance, it can reflect an attitude of tolerance, solidarity and togetherness.
6.	2017	Rachmadyanti	Descriptive Qualitative	Strengthening character education through local wisdom makes learning more meaningful than contextual learning.
7.	2017	Sumayana	Qualitative	Literature learning in elementary schools based on local wisdom can stimulate students to be active in learning and easily understand the material being taught because it is related to everyday life.
8.	2018	Oktavianti, & Ratnasar	Mixed methods and concurrent triangulation strategies.	The use of local content-based teaching materials makes it easier for students to understand the material.
9.	2019	Primayanti, et al.	Experiment	Students who learn to use PBL models based on local wisdom are superior to conventional ones.
10.	2019	Nugroho, et al.	R&D (8 Stages)	Based on the analysis of the linguistic expert validation questionnaire, the design, content/material got a good category with a percentage of 75.83%. From these results, it is stated that this teaching material is valid, practical and effective.





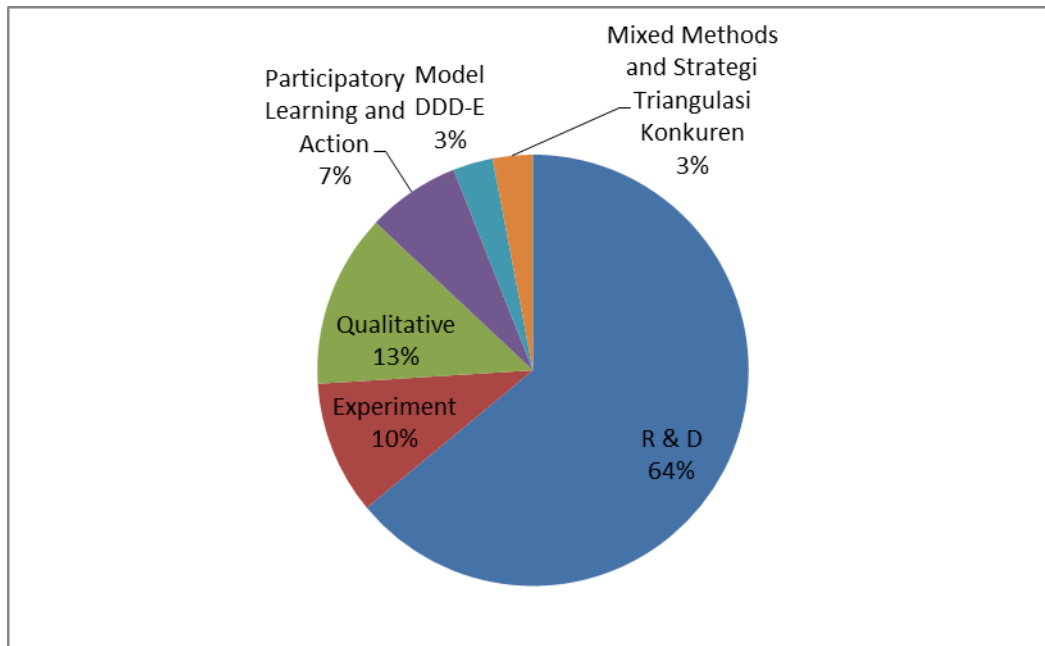
- |     |      |                            |   |   |
|-----|------|----------------------------|---|---|
| 11. | 2019 | Lukman, et al.             | Model DDD-E                                     | The development of animation videos based on local wisdom in the fifth grade science learning was declared valid and practical as well as efficient.  |
| 12. | 2020 | Sururuddin, et al.         | R&D   | Audio-visual media based on Lombok's local wisdom got validation results in the "good" category and the student's response based on the questionnaire was very responsive/very good.  |
| 13. | 2020 | Soi, & Aiman               | Experiment                                      | Can significantly improve students' conceptual mastery of the environmental themes of our friends.  |
| 14. | 2020 | Prihastari, & Widyaningrum | A participatory and awareness-raising approach. | After integrating local culture in making student worksheets, significant changes and improvements were found in integrating local wisdom in the form of worksheets to improve student learning outcomes.   |
| 15. | 2020 | Rahmatih, et al.           | Qualitative (literature study)                  | In science learning in elementary schools that utilize local wisdom, it provides opportunities for students to find knowledge independently and in accordance with the character of science learning such as products, processes and attitudes.   |
| 16. | 2021 | Krismona & Sujana          | R&d (ADDIE)                                     | PBL-based student worksheets get very good qualifications and meet the eligibility for use by educators and students.   |
| 17. | 2021 | Mareta                     | R&D (4D)  | The learning modules resulting from this development are valid, practical and effective.  |
| 18. | 2021 | Sulistiyani, & Deviana     | R&D (Dick & Carey development model)            | Based on the results of the validation by experts, this HOTS math student worksheet was declared valid in the very good category and the test results obtained very valid, interesting, practical and effective results.  |
| 19. | 2021 | Prihastari, & Widyaningrum | R&D (ADDIE)                                     | Student worksheets are very feasible according to media experts with a percentage of 84.375% and 88.46% are very feasible according to material experts, and get a score of 4.4 from students in the very feasible category. So, this student worksheet is very feasible to be disseminated to the field.   |
| 20. | 2021 | Vebrianti, et al.          | R&D (4D)  | The student worksheets were declared very feasible by the validator with a percentage score of 88.3 and the limited trial obtained a score of 95.76 in the very good category and the teacher's response obtained an average of 90.1 with a very decent category.   |
| 21. | 2021 | Arianty, et al.            | R&D (ADDIE)                                     | The student worksheets based on local wisdom in the Lawang-Malam sub-district received a validation percentage of 88% with a very good category, obtaining a student response of 98%. So this student worksheet is feasible and interesting to be used as a reference in the implementation of learning in introducing the cultural diversity of the Indonesian nation. |
| 22. | 2021 | Murni                      | R&D (ADDIE)                                     | Student worksheets get validation results from validators with very valid categories. The results of practicality   |

23.	2022	Aminullah, & Eliihami.	R&D (ADDIE)	obtained a percentage of 75% and 94% with the category of being well implemented, and the effectiveness being in the medium category. So that this student worksheet is valid, practical and effective.
24.	2022	Asmara, & Satria	R&D (Dick & Carey development model)	The developed student worksheets received a very good category from the validators and the responses of teachers and students.
25.	2022	Risyanti, dkk.	Qualitative Descriptive	Student worksheets get a validation percentage of 83.28% from validators and 88.75% limited trial results in the very good category, so this student worksheet is valid, practical and effective.
26.	2022	Meilana, & Aslam.	R&D (ADDIE)	The local wisdom-based student worksheet on theme 6 My ideals contains science material that can be linked to local wisdom in the surrounding area, for example the wisdom of the people near the sea. This can increase students' understanding of the material being taught and attract students' attention to learning.
27.	2022	Wardani, & Suniasih	R&D (ADDIE)	Mathematics teaching materials based on local wisdom that were developed were categorized as good and suitable for use.
28.	2022	Restian, et al.	R&D (ADDIE)	Interactive Student Worksheets based on local wisdom Balinese akasara material is effective and feasible to be applied to fifth grade elementary school students, this is in accordance with the results of the material test with a percentage of 98.7%, media experts 98.6%, design experts 100%, teacher responses 97.5% and 96.1% student responses.
29.	2022	Hattarina, et al.	R&D (ADDIE)	The results of the validation of the experts stated that the material was 90.67%, the teaching material expert was 73.33% and the linguist was 93.33%. The results of the questionnaire responses from teachers are 85.71% and student responses are 91.71% so that student worksheets based on Malang local wisdom are interesting and effective to use in learning.
30.	2022	Agung, & Wulandari	R&D (ADDIE)	The results of the validation of teaching materials got 88%, thematic learning validation got 88.6% with a very good category. The results of the student response questionnaire are 98% so this student worksheet is feasible and interesting to be used as a reference in the implementation of learning to develop students' motivation and interest in learning.
				The results of the feasibility test for STEAM-based interactive student worksheets obtained 93.75% of material experts in the very good category, design experts 87.50% in the good category, media experts in 90% in the very good category, the test results in 90% in the very good category, so the participants' worksheets These

students are feasible, valid, practical and effective to use.

Table 1 illustrates that the use of student worksheets will provide convenience in the learning process. Ease in the learning process because there are work instructions that students must do so that the learning objectives desired by the teacher can be achieved. This student

worksheet is feasible and interesting to be used as a reference in the implementation of learning to develop students' motivation and interest in learning. In terms of the method developed, it can be seen in Figure 3.



**Figure 3. Percentage of Use of Research Methods**

Based on the graphic above, the article meta-analysis conducted by the author is dominated by the R&D (Research and Development) research method. The R&D method has a percentage of 64%, the qualitative method is 13%, the experimental method is 10%, the participatory learning and action method is 7%, and the mixed methods and concurrent triangulation strategy is 3%, and the DDD-E model is 3%. Which of these is illustrated that the development of teaching materials such as student worksheets has increased in number in recent years. In the

development process carried out by researchers, the most widely used R&D models are ADDIE, 4D, 6-stage R&D and 8-stage R&D. However, the trend of the researchers is the ADDIE model.

The results of research conducted by researchers based on table 2 above illustrates that the use of teaching materials such as modules, models, student worksheets, animated video media, audio-visual media, and student worksheets has a positive impact on the learning process, learning outcomes and student character. In experimental articles, the research results tend to be about the use of comics,





student worksheets, teaching materials and comics. The availability of teaching materials such as textbooks and student worksheets, which are limited to explanations of concepts accompanied by examples of questions, makes students less motivated in learning science/physics learning concepts (Pramadi et al., 2013) which motivates the emergence of other teaching materials. The limitations of interesting teaching materials, having steps, explanations of the material and the questions in it are very minimal available in elementary schools. Therefore, many researchers carry out various studies including development to solve problems that occur in the world of education.

In elementary school education, the concept of a subject is still given and explained in general and media is needed to concrete the abstract of the material concept, one of which is using teaching materials based on animated videos, and audio-visual media. Media that displays images and sounds will attract students' interest in paying attention to explanations or media displayed by an educator. In addition, something seen will be remembered longer in the memory and understanding of students than from hearing. If the two are combined, it will optimize students' understanding of the learning material explained by a teacher (Sururuddin et al., 2020). In this meta-analysis, the materials used by the researchers are science, physics, arts and culture, Indonesian language, thematics, mathematics, and social studies. However, in terms of numbers, researchers tend to use science and Indonesian subjects in their research.

The results of the meta-analysis of articles using the R&D method also showed good results. Overall research and development get satisfactory results on the product. In research on product feasibility development, which is made and thoroughly researched by researchers, it is determined from the results of

the validation of the validators, both product validators, language, material, design and others. And the feasibility of usability is also determined from the results of small or large scale trials to teachers and students. Research on the development of student worksheets based on local wisdom of the Masserempulu culture with the theme of my country's diversity in elementary schools obtained a very valid category, namely material validation 85%, media 75% while for an average of 80% with a very valid category and the responses of students and teachers were good (Aminullah et al., 2022).

## **CONCLUSIONS**

Based on the meta-analysis of 30 articles, the percentage of students' use of worksheets is quite high. But the use of student worksheets in each year is different. In 2013 the percentage of student worksheet usage was 3%, in 2016 it was 14%, in 2017 it was 7%, in 2018 it was 3%, in 2019 it was 10%, in 2020 it was 13%, in 2021 it was 23%, and 2022 is 27%. The results of the researchers, the most use of student worksheets in 2022 with a percentage of 27% compared to other years. While the use of the R&D method has a percentage of 64%, qualitative methods 13%, experimental methods 10%, participatory learning and action methods 7%, and mixed methods and concurrent triangulation strategies 3%, and the DDD-E model is 3%. In a period of approximately 8 years, the use of student worksheets in research has increased, especially in the last two years. In research, researchers mostly use the R&D method with the ADDIE model. Research and development produces new products or modifies existing products into new ones as one way to solve educational problems. And the results of the study show a positive direction where research on the development of student worksheets based on local wisdom of the Masserempulu culture with the theme of my



country's diversity in elementary schools gets a very valid category, namely material validation 85%, media 75% while for an average of 80% with a very valid category. and the response of students and teachers is good. Then, other studies also show good results such as experimental research which shows that there is a positive influence in the use of teaching materials such as student worksheets in improving learning outcomes.

## REFERENCE

- Aminullah, Witar, H., Misna, & Elihami. (2022). Pengembangan Lembar Kerja Peserta Didik (LKPD) Berbasis Kearifan Lokal Budaya Maserempulu Tema Keragaman Negeriku di Sekolah Dasar. *Jurnal Pendidikan Sekolah Dasar*, 3(1), 25–30.
- Agung, I. G., & Wulandari, A. (2022). Pengembangan LKPD Interaktif Berbasis STEAM pada Kompetensi Pengetahuan IPS Siswa Kelas V di SD No. 3 Sibangede. 22(1), 285–291. <https://doi.org/10.33087/jiubj.v22i1.2046>.
- Arianty, R., Restian, A., & Mukhlisina, I. (2021). Pengembangan Lkpd Berbasis Kearifan Lokal Kecamatan Lawang-Malang Pada Siswa Kelas 5 Sd. *Jurnal Pendidikan Dasar Perkhasa: Jurnal Penelitian Pendidikan Dasar*, 7(1), 1–12. <https://doi.org/10.31932/jpdp.v7i1.1053>
- Asmara, Y., & Satria, T. G. (2022). Pengembangan Lembar Kerja Siswa Tematik Integratif berbasis Proyek untuk Siswa Kelas IV SD Negeri Mambang Kecamatan Muara Kelinggi. *LJESE: Linggau Journal of Elementary*, 2(2), 35–46. <https://jurnal.lp3mkil.or.id/index.php/ljese/article/view/251%0Ahttps://jurnal.lp3mkil.or.id/index.php/ljese/article/download/251/192>.
- Dasar, D. I. S. (2016). Pembelajaran Seni Budaya Berbasis Kearifan Lokal Dalam Upaya Membangun Pendidikan Karakter Siswa Di Sekolah Dasar. *Ritme*, 2(1), 16–25.
- Dini Siswani, M., & Suwarno. (2016). PTK (Penelitian Tindakan Kelas) Dengan Pembelajaran Berbasis Kearifan Lokal Dan Penulisan Artikel Ilmiah Di SD Negeri Kalisube, Banyumas. *Khazanah Pendidikan Jurnal Ilmiah Kependidikan*, IX(2), 11. <http://jurnalnasional.ump.ac.id/index.php/khazanah/article/view/1062/983>
- Fauzi, M. (2022). *Meta Analisis Pengaruh Pengintegrasian Kearifan Lokal Dalam Pembelajaran IPA dan Fisika Terhadap Hasil Belajar*. 8(1), 72–81.
- Harahap, D. G. S., Festiyed, & E. (2020). Meta-Analisis Penggunaan Model Pengembangan. *Jurnal Education and Development*, 8(2), 461–467.
- Hattarina, S., Dwiyantri, A. N., Chemo, S., & Abdus, N. (2022). Pengembangan LKPD Beorientasi Contextual Teaching and Learning pada Pembelajaran Tematik Siswa Kelas 5 SDN Temenggungan. *Journal On Teacher Education Research & Learning in Faculty of Education* 3, 173–179.
- Krismona Arsana, I. W. O., & Sujana, I. W. (2021). Pengembangan Lembar Kerja Peserta Didik (Lkpd) Berbasis Project Based Learning Dalam Muatan Materi IPS. *Jurnal Imiah Pendidikan Dan Pembelajaran*, 5(1), 134. <https://doi.org/10.23887/jipp.v5i1.32817>
- Kristin, F., & Artikel, I. (2018). *Meta-Analisis Pengaruh Model Pembelajaran Role Playing Terhadap Hasil Belajar IPS. Journal On Teacher Education Research*



- & Learning in Faculty of Education, 8(2), 110-125.
- Lukman, A., Hayati, D. K., & Hakim, N. (2019). Pengembangan Video Animasi Berbasis Kearifan Lokal pada Pembelajaran IPA Kelas V di Sekolah Dasar. *Elementary: Jurnal Ilmiah Pendidikan Dasar*, 5(2), 153.  
<https://doi.org/10.32332/elementary.v5i2.1750>.
- Mareta Widiya, Eka Lokaria, S. (2021). Pengembangan Modul Pembelajaran IPA Berbasis Kearifan Lokal Kelas Tinggi di Sekolah Dasar. *Jurnal Basicedu*, 5, 3315–3318.
- Meilana, S. F., & Aslam. (2022). Pengembangan Bahan Ajar Tematik Berbasis Kearifan Lokal di Sekolah Dasar. *Jurnal Basicedu*, 6, 5605–5613.
- Murni, Arie Widya. Yasin, F. N. (2021). Pengembangan LKPD Berbasis Proyek pada Materi Siklus Air Kelas V Sekolah Dasar. *Jurnal Basicedu*, 5, 6196–6210.
- Mursalim, M., & Rumbarak, T. A. (2021). Pengaruh Lembar Kerja Peserta Didik (LKPD) terhadap Hasil Belajar IPS Siswa Kelas IV SD YPK Getsemani Warwanai. *Jurnal Papeda: Jurnal Publikasi Pendidikan Dasar*, 3(2), 175–184.  
<https://doi.org/10.36232/jurnalpendidikandasar.v3i2.1155>
- Nugroho, A., Lazuardi, D. R., & Murti, S. (2019). Pengembangan Bahan Ajar Lks Menulis Pantun Berbasis Kearifan Lokal Siswa Kelas Vii Smp Xaverius Tugumulyo. *KEMBARA: Jurnal Keilmuan Bahasa, Sastra, Dan Pengajarannya*, 5(1), 1.  
<https://doi.org/10.22219/kembara.vol5.no1.1-12>
- Oktavianti, I., & Ratnasari, Y. (2018). Etnopedagogi Dalam Pembelajaran Di Sekolah Dasar Melalui Media Berbasis Kearifan Lokal. *Refleksi Edukatika : Jurnal Ilmiah Kependidikan*, 8(2).  
<https://doi.org/10.24176/re.v8i2.2353>
- Pingge, H. D. (2017). KEARIFAN LOKAL DAN PENERAPANNYA DI SEKOLAH CORE View metadata, citation and similar papers at core.ac.uk provided by Jurnal STKIP Weetebula. *Jurnal Edukasi Sumba*, 01(02), 128–135.
- Pramadi, I. P. W. Y., Suastra, I. W., & Candiasa, I. M. (2013). Pengaruh Penggunaan Komik Berorientasi Kearifan Lokal Bali Terhadap Motivasi Belajar Dan Pemahaman Konsep Fisika. *E-Journal Program Pascasarjana Universitas Pendidikan Ganesha*, 3, 1–10.
- Pratiwi, T. A. (2016). Pengembangan Lembar Kegiatan Siswa Berbasis Kearifan Lokal Tema Kegemaranku Subtema Gemar Berolahraga & Gemar Bernyanyi Dan Menari Di Kelas I Sdn Utama 1 Tarakan. *Premiere Educandum : Jurnal Pendidikan Dasar Dan Pembelajaran*, 6(02), 146–161.  
<https://doi.org/10.25273/pe.v6i02.807>
- Prihastari, E. B., & Widyaningrum, R. (2021). Integrasi Budaya Lokal Dalam Pengembangan LKPD Untuk Mewujudkan Gerakan Literasi Sekolah. *MENDIDIK: Jurnal Kajian ...*, 7(1), 43–49.  
<https://doi.org/10.30653/003.202171.155>
- Primayanti, E., Suarjana, I. M., & Astawan, I. G. (2019). Pengaruh Model Pbl Bermuatan Kearifan Lokal Kritis Matematika Siswa Kelas V Di Gugus V. 3, 28–34.  
<https://ejournal.undiksha.ac.id/index.php/JET>
- Putri, F. A., & Ananda, L. J. (2020). Pengembangan Lembar Kerja Peserta



- Didik Berbasis Inkuiri Untuk Siswa Sekolah Dasar. *Jurnal Sekolah PGSD FIP UNIMED*, 4(4), 70–77.
- Rachmadyanti, P. (2017). Penguatan Pendidikan Karakter Bagi Siswa Sekolah Dasar Melalui Kearifan Lokal. *Jurnal Pendidikan Sekolah Dasar*, 3(2), 201. <https://doi.org/10.30870/jpsd.v3i2.2140>
- Rahmatih, A. N., Maulyda, M. A., & Syazali, M. (2020). Refleksi Nilai Kearifan Lokal (Local Wisdom) dalam Pembelajaran Sains Sekolah Dasar: Literature Review. *Jurnal Pijar Mipa*, 15(2), 151–156. <https://doi.org/10.29303/jpm.v15i2.1663>
- Restian, A., Deviana, T., & Saputri, Y. N. E. (2020). Pengembangan LKS Berbasis Kearifan Lokal di Malang Untuk Siswa Kelas IV SD. *Scholaria: Jurnal Pendidikan Dan Kebudayaan*, 10(1), 85–91. <https://doi.org/10.24246/j.js.2020.v10.i1.p85-91>
- Risyanti, A., Rahayu, A., & Purnama, S. D. I. (2022). Analisis Materi IPA Pada Lembar Kerja Peserta Didik Berbasis Kearifan Lokal Dalam Pembelajaran Tematik Kelas IV SD Negeri Tegalrejo Purworejo. *Prosiding Seminar Nasional Pendidikan Guru Sekolah Dasar*.
- Soi, Y., & Aiman, U. (2020). Pengaruh Penggunaan Bahan Ajar Berbasis Kearifan Lokal Terhadap Penguasaan Konsep Siswa Kelas V di Sekolah Dasar. *Prosiding Seminar Nasional ...*, September, 24–30. <http://research-report.umm.ac.id/index.php/psnpb/article/view/3643%0Ahttp://research-report.umm.ac.id/index.php/psnpb/article/download/3643/3608>
- Sulistiyani, N., & Deviana, T. (2021). Pengembangan LKPD Matematika HOTS (Higher of Order Thinking Skills) Berorientasi Kearifan Lokal Daerah untuk Sekolah Dasar. *Jurnal Ilmiah Mandala Education*, 7(1), 304–312. <https://doi.org/10.36312/jime.v7i1.1722>
- Sumayana, Y. (2017). Pembelajaran Sastra Di Sekolah Dasar Berbasis Kearifan Lokal (Cerita Rakyat). *Mimbar Sekolah Dasar*, 4(1), 21–28. <https://doi.org/10.23819/mimbar-sd.v4i1.5050>
- Sururuddin, M., Burhanuddin, B., Zohrani, Z., & Dwi Safitri, A. (2020). Pengembangan Media Audio Visual Berbasis Kearifan Lokal Pada Tema 1 Indahnya Kebersamaan Kelas Iv Sdn Tahun Pelajaran 2019/2020. *Jurnal Didika: Wahana Ilmiah Pendidikan Dasar*, 6(1), 139–147. <https://doi.org/10.29408/didika.v6i1.2337>
- Undang-undang No.23 Tahun 2003 tentang Sistem Pendidikan Nasional*. (n.d.).
- Aminullah, Witalar, H., Misna, & Eliihami. (2022). Pengembangan Lembar Kerja Peserta Didik (LKPD) Berbasis Kearifan Lokal Budaya Maserempulu Tema Keragaman Negeriku di Sekolah Dasar. *Jurnal Pendidikan Sekolah Dasar*, 3(1), 25–30.
- Agung, I. G., & Wulandari, A. (2022). *Pengembangan LKPD Interaktif Berbasis STEAM pada Kompetensi Pengetahuan IPS Siswa Kelas V di SD No. 3 Sibanggede*. 22(1), 285–291. <https://doi.org/10.33087/jjubj.v22i1.2046>
- Arianty, R., Restian, A., & Mukhlisina, I. (2021). Pengembangan Lkpd Berbasis Kearifan Lokal Kecamatan Lawang-Malang Pada Siswa Kelas 5 Sd. *Jurnal Pendidikan Dasar Perkhasa: Jurnal Penelitian Pendidikan Dasar*, 7(1), 1–12. <https://doi.org/10.31932/jpdp.v7i1.1053>





- Asmara, Y., & Satria, T. G. (2022). Pengembangan Lembar Kerja Siswa Tematik Integratif berbasis Proyek untuk Siswa Kelas IV SD Negeri Mambang Kecamatan Muara Kelinggi. *LJESE: Linggau Journal of Elementar*, 2(2), 35–46.  
<https://jurnal.lp3mkil.or.id/index.php/ljese/article/view/251%0Ahttps://jurnal.lp3mkil.or.id/index.php/ljese/article/download/251/192>
- Dasar, D. I. S. (2016). Pembelajaran Seni Budaya Berbasis Kearifan Lokal Dalam Upaya Membangun Pendidikan Karakter Siswa Di Sekolah Dasar. *Ritme*, 2(1), 16–25.
- Dini Siswani, M., & Suwarno. (2016). PTK (Penelitian Tindakan Kelas) Dengan Pembelajaran Berbasis Kearifan Lokal Dan Penulisan Artikel Ilmiah Di SD Negeri Kalisube, Banyumas. *Khazanah Pendidikan Jurnal Ilmiah Kependidikan*, IX(2), 11.  
<http://jurnalnasional.ump.ac.id/index.php/khazanah/article/view/1062/983>
- Fauzi, M. (2022). *Meta Analisis Pengaruh Pengintegrasian Kearifan Lokal Dalam Pembelajaran IPA dan Fisika Terhadap Hasil Belajar*. 8(1), 72–81.
- Harahap, D. G. S., Festiyed, & E. (2020). Meta-Analisis Penggunaan Model Pengembangan. *Jurnal Education and Development*, 8(2), 461–467.
- Hattarina, S., Dwiyantri, A. N., Chemo, S., & Abdus, N. (2022). *JOTE Volume 3 Nomor 3 Tahun 2022 Halaman 173-179 JOURNAL ON TEACHER EDUCATION Research & Learning in Faculty of Education Pengembangan LKPD Beorientasi Contextual Teaching and Learning pada Pembelajaran Tematik Siswa Kelas 5 SDN Temenggungan*. 3, 173–179.
- Krismona Arsana, I. W. O., & Sujana, I. W. (2021). Pengembangan Lembar Kerja Peserta Didik (Lkpd) Berbasis Project Based Learning Dalam Muatan Materi IPS. *Jurnal Imiah Pendidikan Dan Pembelajaran*, 5(1), 134.  
<https://doi.org/10.23887/jipp.v5i1.32817>
- Kristin, F., & Artikel, I. (2018). Meta-Analisis Pengaruh Model Pembelajaran Role Playing Terhadap Hasil Belajar IPS. 8(2).
- Lukman, A., Hayati, D. K., & Hakim, N. (2019). Pengembangan Video Animasi Berbasis Kearifan Lokal pada Pembelajaran IPA Kelas V di Sekolah Dasar. *Elementary: Jurnal Ilmiah Pendidikan Dasar*, 5(2), 153.  
<https://doi.org/10.32332/elementary.v5i2.1750>
- Mareta Widiya, Eka Lokaria, S. (2021). Pengembangan Modul Pembelajaran IPA Berbasis Kearifan Lokal Kelas Tinggi di Sekolah Dasar. *Jurnal Basicedu*, 5, 3315–3318.
- Meilana, S. F., & Aslam. (2022). Pengembangan Bahan Ajar Tematik Berbasis Kearifan Lokal di Sekolah Dasar. *Jurnal Basicedu*, 6, 5605–5613.
- Murni, Arie Widya. Yasin, F. N. (2021). Pengembangan LKPD Berbasis Proyek pada Materi Siklus Air Kelas V Sekolah Dasar. *Jurnal Basicedu*, 5, 6196–6210.
- Mursalim, M., & Rumberak, T. A. (2021). Pengaruh Lembar Kerja Peserta Didik (LKPD) terhadap Hasil Belajar IPS Siswa Kelas IV SD YPK Getsemani Warwanai. *Jurnal Papeda: Jurnal Publikasi Pendidikan Dasar*, 3(2), 175–184.  
<https://doi.org/10.36232/jurnalpendidikandasar.v3i2.1155>
- Nugroho, A., Lazuardi, D. R., & Murti, S. (2019). Pengembangan Bahan Ajar Lks





- Menulis Pantun Berbasis Kearifan Lokal Siswa Kelas Vii Smp Xaverius Tugumulyo. *KEMBARA: Jurnal Keilmuan Bahasa, Sastra, Dan Pengajarannya*, 5(1), 1. <https://doi.org/10.22219/kembara.vol5.no1.1-12>
- Oktavianti, I., & Ratnasari, Y. (2018). Etnopedagogi Dalam Pembelajaran Di Sekolah Dasar Melalui Media Berbasis Kearifan Lokal. *Refleksi Edukatika : Jurnal Ilmiah Kependidikan*, 8(2). <https://doi.org/10.24176/re.v8i2.2353>
- Pingge, H. D. (2017). KEARIFAN LOKAL DAN PENERAPANNYA DI SEKOLAH CORE View metadata, citation and similar papers at core.ac.uk provided by Jurnal STKIP Weetebula. *Jurnal Edukasi Sumba*, 01(02), 128–135.
- Pramadi, I. P. W. Y., Suastra, I. W., & Candiasa, I. M. (2013). Pengaruh Penggunaan Komik Berorientasi Kearifan Lokal Bali Terhadap Motivasi Belajar Dan Pemahaman Konsep Fisika. *E-Journal Program Pascasarjana Universitas Pendidikan Ganesha*, 3, 1–10.
- Pratiwi, T. A. (2016). Pengembangan Lembar Kegiatan Siswa Berbasis Kearifan Lokal Tema Kegemaranku Subtema Gemar Berolahraga & Gemar Bernyanyi Dan Menari Di Kelas I Sdn Utama 1 Tarakan. *Premiere Educandum : Jurnal Pendidikan Dasar Dan Pembelajaran*, 6(02), 146–161. <https://doi.org/10.25273/pe.v6i02.807>
- Prihastari, E. B., & Widyaningrum, R. (2021). Integrasi Budaya Lokal Dalam Pengembangan LKPD Untuk Mewujudkan Gerakan Literasi Sekolah. *MENDIDIK: Jurnal Kajian ...*, 7(1), 43–49. <https://doi.org/10.30653/003.202171.15>
- 5
- Primayanti, E., Suarjana, I. M., & Astawan, I. G. (2019). Pengaruh Model Pbl Bermuatan Kearifan Lokal Kritis Matematika Siswa Kelas V Di Gugus V. 3, 28–34. <https://ejournal.undiksha.ac.id/index.php/JET>
- Putri, F. A., & Ananda, L. J. (2020). Pengembangan Lembar Kerja Peserta Didik Berbasis Inkuiri Untuk Siswa Sekolah Dasar. *Jurnal Sekolah PGSD FIP UNIMED*, 4(4), 70–77.
- Rachmadyanti, P. (2017). Penguatan Pendidikan Karakter Bagi Siswa Sekolah Dasar Melalui Kearifan Lokal. *Jurnal Pendidikan Sekolah Dasar*, 3(2), 201. <https://doi.org/10.30870/jpsd.v3i2.2140>
- Rahmatih, A. N., Maulyda, M. A., & Syazali, M. (2020). Refleksi Nilai Kearifan Lokal (Local Wisdom) dalam Pembelajaran Sains Sekolah Dasar: Literature Review. *Jurnal Pijar Mipa*, 15(2), 151–156. <https://doi.org/10.29303/jpm.v15i2.1663>
- Restian, A., Deviana, T., & Saputri, Y. N. E. (2020). Pengembangan LKS Berbasis Kearifan Lokal di Malang Untuk Siswa Kelas IV SD. *Scholaria: Jurnal Pendidikan Dan Kebudayaan*, 10(1), 85–91. <https://doi.org/10.24246/j.js.2020.v10.i1.p85-91>
- Risyanti, A., Rahayu, A., & Purnama, S. D. I. (2022). Analisis Materi IPA Pada Lembar Kerja Peserta Didik Berbasis Kearifan Lokal Dalam Pembelajaran Tematik Kelas IV SD Negeri Tegalrejo Purworejo. *Prosiding Seminar Nasional Pendidikan Guru Sekolah Dasar*.
- Soi, Y., & Aiman, U. (2020). Pengaruh Penggunaan Bahan Ajar Berbasis Kearifan Lokal Terhadap Penguasaan Konsep Siswa Kelas V di Sekolah Dasar. *Prosiding Seminar Nasional ...*,



- September, 24–30. <http://research-report.umm.ac.id/index.php/psnpb/article/view/3643%0Ahttp://research-report.umm.ac.id/index.php/psnpb/article/download/3643/3608>
- Sulistiyani, N., & Deviana, T. (2021). Pengembangan LKPD Matematika HOTS (Higher of Order Thinking Skills) Berorientasi Kearifan Lokal Daerah untuk Sekolah Dasar. *Jurnal Ilmiah Mandala Education*, 7(1), 304–312. <https://doi.org/10.36312/jime.v7i1.1722>
- Sumayana, Y. (2017). Pembelajaran Sastra Di Sekolah Dasar Berbasis Kearifan Lokal (Cerita Rakyat). *Mimbar Sekolah Dasar*, 4(1), 21–28. <https://doi.org/10.23819/mimbar-sd.v4i1.5050>
- Sururuddin, M., Burhanuddin, B., Zohrani, Z., & Dwi Safitri, A. (2020). Pengembangan Media Audio Visual Berbasis Kearifan Lokal Pada Tema 1 Indahnya Kebersamaan Kelas Iv Sdn Tahun Pelajaran 2019/2020. *Jurnal Didika: Wahana Ilmiah Pendidikan Dasar*, 6(1), 139–147. <https://doi.org/10.29408/didika.v6i1.233>
- 7
- Undang-undang No.23 Tahun 2003 tentang Sistem Pendidikan Nasional*. (n.d.).
- Utari, U., Degeng, I. N. S., & Akbar, S. (2016). Pembelajaran Tematik Berbasis Kearifan Lokal Di Sekolah Dasar Dalam Menghadapi Masyarakat Ekonomi Asean (MEA). *Jurnal Teori Dan Praksis Pembelajaran IPS*, 1(1), 39–44. <https://doi.org/10.17977/um022v1i12016p039>
- Vebrianti, Y., Noviana, E., & Kurniaman, O. (2017). *Development of Student Worksheet Based on Local Wisdom Ips Studies Fourt Grade Iv Sdn 161 Pekanbaru Berbasis Kearifan Lokal Mata Pelajaran Ips Kelas Iv Sdn 161 Pekanbaru*. 1–12.
- Wardani, W. P., & Suniasih, N. W. (2022). E-LKPD Interaktif Berbasis Kearifan Lokal pada Materi Aksara Bali Kelas V Sekolah Dasar. *Mimbar Ilmu*, 27(1), 173–182. <https://doi.org/10.23887/mi.v27i1.44586>
- Zuhdan. (2013). Kearifan Lokal dan Penerapannya di Sekolah Dasar. *Jurnal Edukasi Sumba*, 01, 125–135.